

Ewe lambs make \$224



Jeff Sutton of "Wattle Farm" Border Leicester Stud, Temora, making the presentation for the annual Barellan FX Ewe Sale Best Presented Pen of Ewe Lambs 2015, prior to the opening of the sale. *Picture: Supplied.*

An outstanding season on the tablelands underpinned prices at Barellan on Friday February 6.

Pen upon pen was started at \$200, making to a top of \$224 on three occasions, with a sale average of \$195.

The 2014 drop ewe lambs averaged \$200 and the SIL mixed age FX ewes averaged \$171.

Buying strength was from Crookwell, Blayney, Oberon, Cootamundra, Bendigo, Forbes, Wagga and surrounding areas.

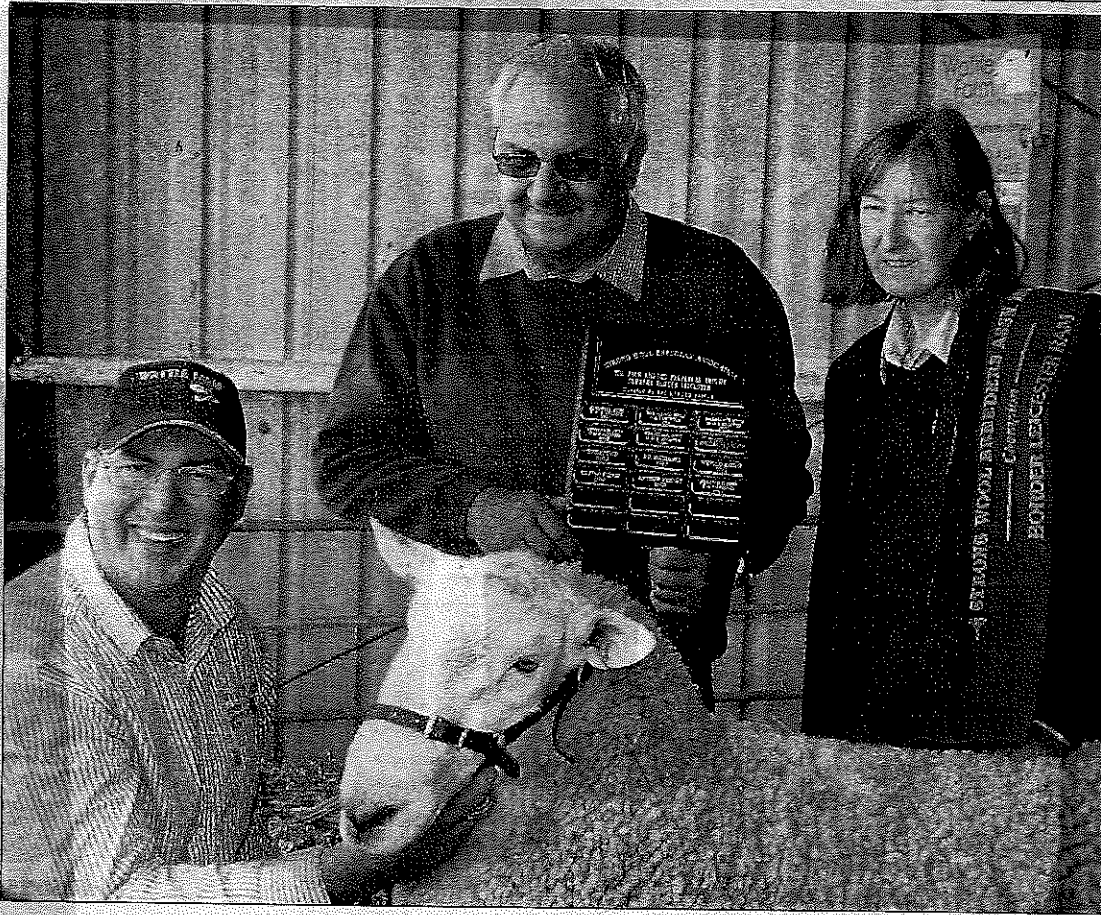
A presentation for the Best Presented Pen of Ewe Lambs, sponsored by SJ Tonacia & Co of Mt Beckom Stud, was awarded to Flagg Family Trust "Townswell Park" Moombooldool.

This line of 325 March 14 drop Oct shorn ewe lambs went on to equal top the sale at \$224 and were purchased by Duncombe & Co Crookwell.

Contributed

'ENSIGN' 6/5/15

www.benallaensign.com.au



Grand Champion: Wattle Farm Gold II, Champion Border Leicester ram with owner Jeff Sutton and the judges.

Sheep on show

By Libby Price

Luxurious strong wools from rare breeds of sheep were on display at this year's annual Strong Wool Sheep and Wool Fair in Benalla last Sunday.

Winner of the Champion Ram for the feature breed, Border Leicester, was Wattle Farm Gold II owned by Jeff Sutton of Temora, NSW.

Gold II had already taken out champion ram at the Australian Sheep and Wool show at Bendigo in 2013, and Champion Border Leicester and Supreme Exhibit at the Royal Canberra Show last year.

This year the show focused on wool crafts with junior and open classes for garments, scarves and any other item made from 100 per cent wool.

There were crafts stalls and demonstrations involving strong wool including spinning yarn using a spinning wheel.

Another feature was the



NSW State Sheep Show Report

Wattle Farm's two top Border ring

By MARK GRIGGS

FOLLOWING junior and grand Border Leicester championship awards at Sydney Royal Show earlier this year, Wattle Farm Three Wishes added both an interbreed long wool and supreme ewe laurel to its impressive list of accolades at the 2015 Landmark NSW State Sheep Show.

Shown by Jeff Sutton and family of Wattle Farm stud, Temora, the ewe was sired by Coolawang Impact, the 2013 Adelaide Royal champion ram.

Mr Sutton had earlier won the junior ram championship with Wattle Farm Rock 'n' Roll, a son of Wattle Farm Impact, prior to the ram being awarded breed grand champion by judge, Ivan Chandler, Chandivan stud, Barham.

This ram was named interbreed long wool champion later in the show. Mr Chandler said he would "love" to take home both ewe broad ribbon winners and the rams were excellent examples of the breed.

Runner-up in most classes and championships was the Bindaree

stud operated by Reg and Robyn Sweeney and daughter, Rowena, "Pinehurst", Merrygoen, who exhibited the reserve senior champion ram and ewe and reserve junior champion ewe to become the section's most successful exhibitor.

Reg Sweeney said the reserve senior ewe, rising four years of age, had already mothered a set of twins and two sets of triplet lambs.

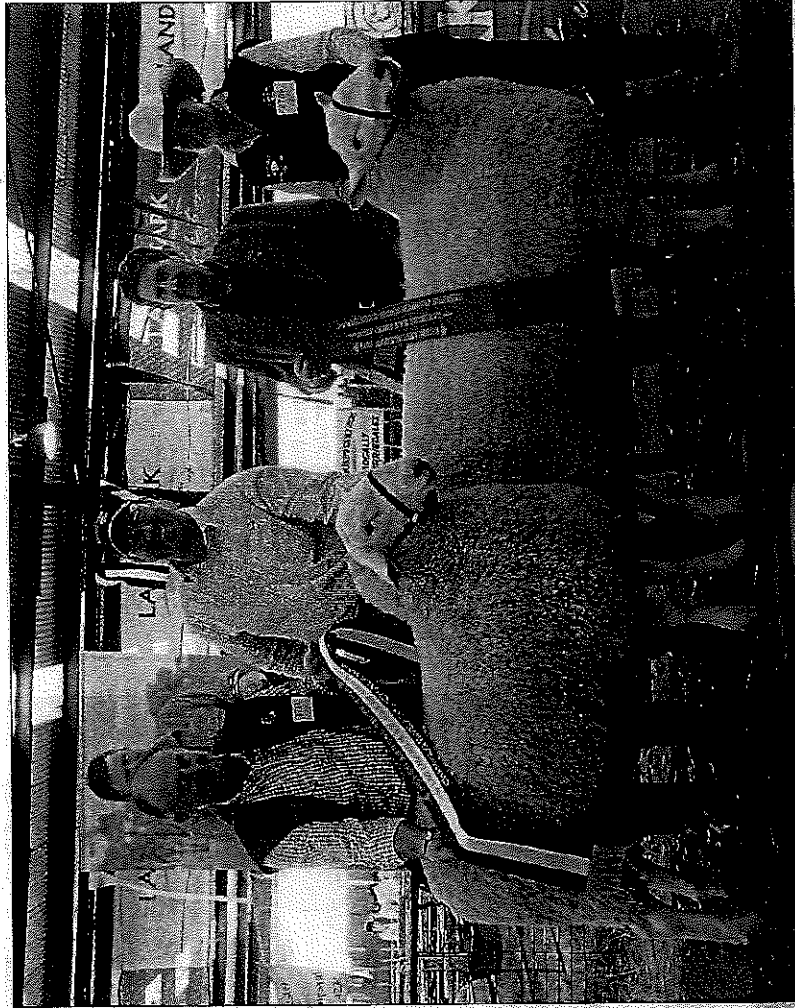
She had won the woolly over two years class and was sired by Ellingerrin Vintage, and was reserve senior champion at the Australian Sheep and Wool Show, Bendigo, Victoria, last year.

Brothers Ben, Daniel and Matthew Simmons of Talbragar stud, Leadville, exhibited the reserve junior ram and the winning group of three.

Border Leicester

Junior and grand ram: Wattle Farm, Temora. **Res:** Talbragar, Leadville
Grand res: Bindaree, Merrygoen.
Junior grand and supreme ewe: Wattle Farm. **Res:** Bindaree.
Grand res: Bindaree
Best head: Bindaree

LEFT: Peter Matus, Tara stud, Rockley, sashes grand champion Border Leicester ram, shown by Jeff Sutton, Wattle Farm stud, Temora, with the judge, Ivan Chandler, Chandivan stud, Barham, sashing the reserve exhibited by Rowena Sweeney, Bindaree stud, Merrygoen.



the
 temj
 Ow
 swab
 lect a
 genoh
 ic gr

of fire

Gromark Genetic rams for their excellent figures and

average \$500.

Scott Byrne, "Allawah",

"Yangoora" Gromark Genetics/Merino cross.

NSW best long wool group

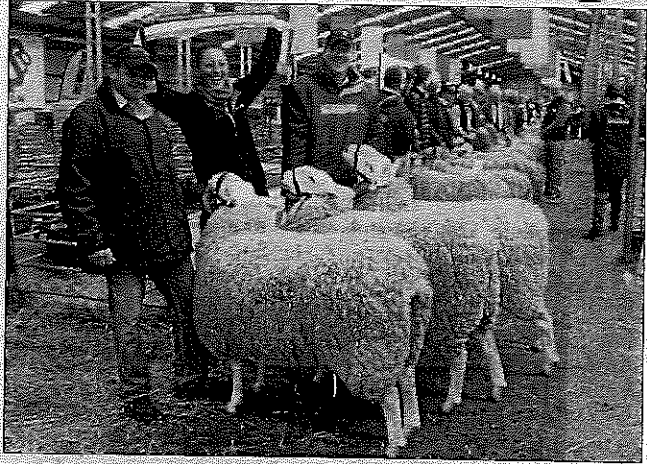
THE supreme long wool champion group at Sheepvention in Hamilton, Victoria, was exhibited by Jeff Sutton, Wattle Farm Border Leicester stud, from Temora, who also won the ASSBA breeds group sash.

A White Suffolk ewe defeated the feature breed showcase of 250 sheep at Sheepvention, before being crowned supreme interbreed short wool ewe.

It capped off a top performance by Tim Jorgensen, Mertex, Antwerp, Vic, who established the White Suffolk arm of the family's stud just three years ago.

It is the breed's 30th anniversary in Australia, which Mr Jorgensen said sweetened the young stud's win.

Supreme short wool ram was awarded to a 13 month-old Suffolk, exhibited by Deva



Wattle Farm Border Leicesters Aaron Cronk, RASV agricultural development officer Fiona Looker and stud principal Jeff Sutton with the supreme interbreed long wool group.

Weitman, of Blue Rock, Romsey, Vic.

Mornington Peninsula, Vic, based Woodleigh High School made the record books after

being awarded supreme interbreed long wool ewe with a Corriedale - the first time a school exhibit has been awarded the competitive title.

Sheepven - 2015
↑

Interstate studs strike

By ANNABELLE BEALE

INTERSTATE visitors claimed the two top gongs at the Royal Melbourne Show prime lamb interbreed competition.

In the female section, the five judges recognised excellent examples of the breeds and chose a striking Border Leicester ewe, exhibited by NSW breeder Jeff Sutton, Wattle Farm, Temora for the champion position and a large-framed Suffolk, exhibited by Deppeler, Derrinallum, as reserve champion.

The Wattle Farm ewes were praised as a magnificent example of the breed, with a terrific carcass wrapped in an ideal fleece.

Judge Dianne Huett sashed the ewe and said it set a new standard for the Border Leicester breed.

But it was the Day family of Bordertown, South Australia, that had the best day out.

Brothers Alastair Day, Allendale Suffolks, and Lachy Day's, Days Whiteface, White Suffolk sashing as champion interbreed ram and reserve title, respectively, were some of many accolades the family

Interbreed

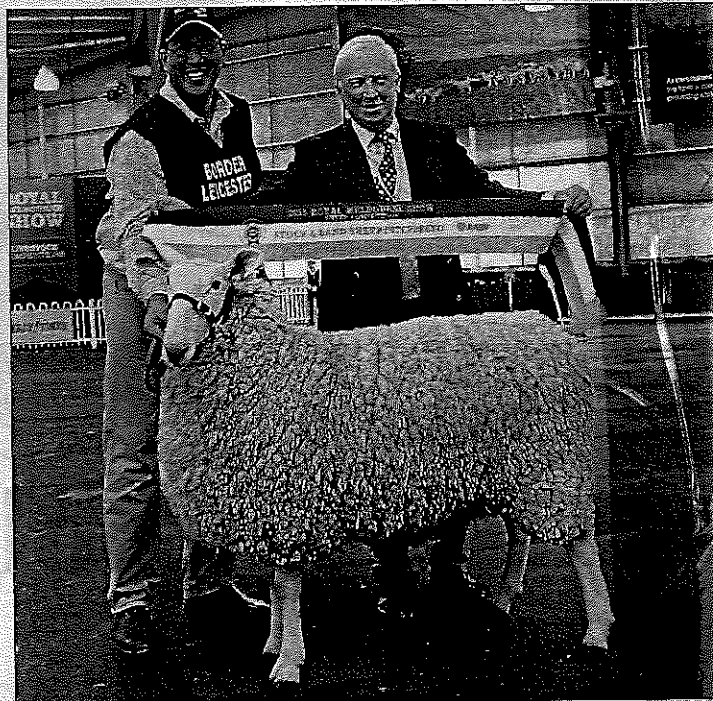
Champion ram: Suffolk - Allendale, Bordertown, SA. **Res:** White Suffolk Days Whiteface, Bordertown, SA
Champion ewe: Border Leicester Wattle Farm, Temora. **Res:** Suffolk - Deppeler, Derrinallum, Vic.
Sires progeny group: Poll Dorset - Derby Downs, Marong, Vic.
Breeders Group: Poll Dorset - Allendale
Ram trifecta: Poll Dorsets - Allendale and Leenala, Naracoorte, SA

received in the sheep arena during the weekend.

Industry stalwart and show steward Bruce Starritt, Tatura, Vic, said it was one of the best performances by one family, across several breeds, he had ever seen at a show.

"The Day family has proven they are the leading stud masters in Australia - just reading their performance (at Melbourne) they've taken out champion and reserve (interbreed ram) and had nine sheep from three breeds in the top 12 of the interbreed group judging," Mr Starritt said.

Allendale's champion interbreed ram was praised for his structure



Wattle Farm principal Jeff Sutton, Temora, exhibited the champion interbreed ewe, sashed by RASV president Stephen Spargo.

and outstanding growth for age.

The August 2014-drop ram weighed 135.5 kilograms and measured a fat depth of 10 millimetres, muscle depth of 49mm, muscle width of 100mm and muscle area of 38cm.

Of the brother-to-brother battle, Allendale principal Alastair Day said it was a thrill for the family.

"When you have respected sheep breeders judge your sheep and give you an award, it isn't a lottery, it is very humbling," he said.

Their success continued with Allendale Poll Dorset's taking out the breeders group and two rams in the champion ram trifecta team, sashed to Poll Dorset breed which

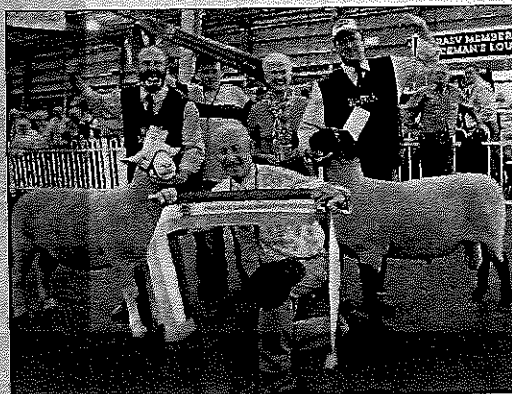
included a ram from Leenala Naracoorte, South Australia.

The sires progeny group was awarded to a Poll Dorset team exhibited by Derby Downs, Marong, Victoria, which judge Kevin Moores, Campania, Tasmania, said was sheep that progressed the breed.

The interbreed win topped a stellar show for stud principal Dr McKinnon.

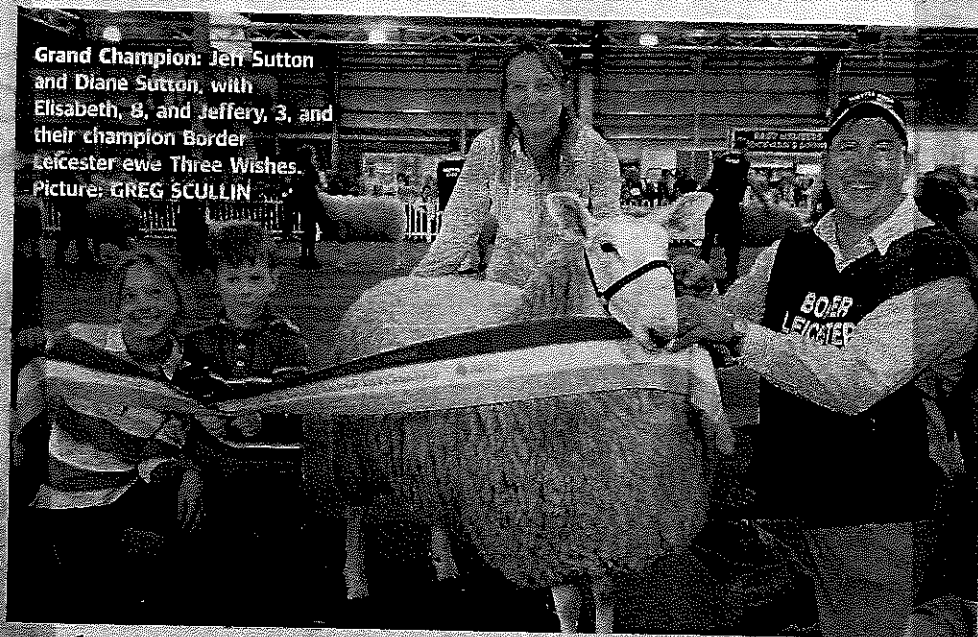
"It is encouraging to win a prestigious award which is proof we are selecting the right sires," he said.

"To put three (stud-bred Poll Dorsets) together in a group awarded the champion sash is a satisfying achievement for a stud breeder."



LEFT: The Day family of Bordertown, South Australia, Lachy, Angus, Prue, Alastair and Graham (front) with the interbreed champion ram (right) sashed to the Allendale Suffolk exhibit and reserve champion (left) sashed to the Days Whiteface White Suffolk exhibit.

WEDNESDAY SEPTEMBER 23 2015



Grand Champion: Jeff Sutton and Diane Sutton, with Elisabeth, 8, and Jeffery, 3, and their champion Border Leicester ewe Three Wishes. Picture: GREG SCULLIN

Three Wishes come true

By KATE DOWLER

JEFF Sutton had not won a prize "anywhere near this magnitude" before his Border Leicester took out the Interbreed Championship Ewe sash at the Royal Melbourne Show on the weekend.

But the Wattle Farm Border Leicester stud ewe, dubbed Three Wishes after Jeff and wife Diane's children's favourite toy figurine, has taken home other ribbons.

Three Wishes took out the Grand Champion ewe award for her breed at the Sydney Royal this year, as well as Supreme in the breed at the Dubbo, NSW, sheep show.

"But this interbreed win

means a lot to me," Jeff said.

"I picked this ewe out as a young lamb and backed myself and hoped she would be good enough to compete and do well," he said.

"I've nursed her for 12 months to get her up to this."

Jeff said the ewe's "structure, style, balance and quality of her bone and fleece" were among reasons for her win.

The Sutton family travelled to the show from their property at Temora in NSW.

"Quality Border Leicesters are always in demand, and first-cross ewes are making very good money now," he said.

"From a commercial viewpoint, showing is very useful

for getting your name out there and bounced around as one of the better studs.

"We're in LambPlan too and objectively measure. Our clients like the balance between good visual assessment; people want to see that the sheep are structurally correct but they also want the objective measurement."

This was the sixth year the Suttons have shown at Melbourne.

"It is a great show and very family-oriented here. The officials all work to make you welcome," Jeff said. After a busy showing season, Three Wishes will be heading to the shearing shed where Jeff expects the fleece to weigh in at 7kg.

Wattle Farm to \$3500 top

By CARA
JEFFERY

BORDER Leicester rams sold to \$3500 at the Sutton family's fourth annual Wattle Farm stud sale held near Temora last Friday.

In the breakdown, four of the six stud rams offered were sold under the hammer for a top price of \$3500 to average \$2626.

The top-priced ram was secured by relative newcomer to the breed Rick Hoolihan, Rose-Lea Border Leicester stud, Rydal, who established his Wattle Farm daughter stud last year.

Mr Hoolihan said genetics and wool type were what sold him on the ram.

The 2014-drop ram was from a Coolawang sire — the same sire that bred the Sutton's ewe Three Wishes, which took out both the supreme interbreed at NSW Sheep Show at Dubbo and the Royal Melbourne interbreed championship ewe sash this year.

The ram recorded a 2.8 kilogram weaning weight, 4.4kg post weaning weight and 108.10 Border \$Index figure.

Mr Hoolihan said the ram's fine wool type would suit the high rainfall area where he farmed.

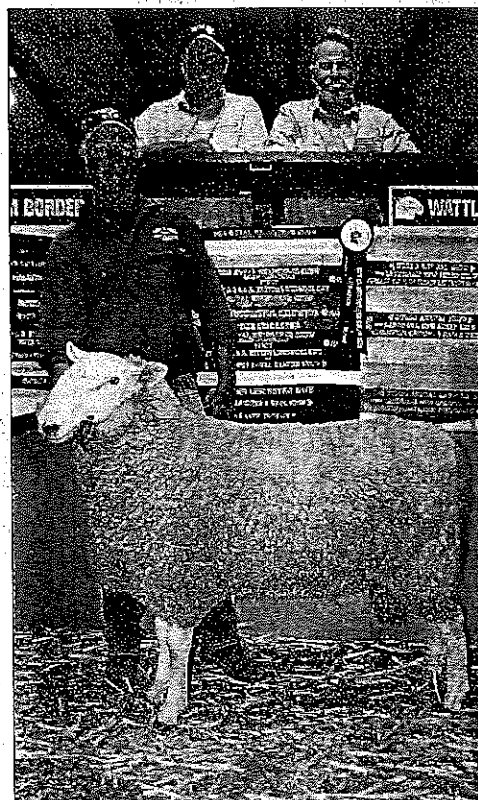
He said there was growing demand for Border Leicester rams in his district with six of the 10 ram lambs (July/August 2015-drop) he had on the ground already sold and ready to go when they were of age.

Mr Hoolihan also secured two stud ewes for \$400 and \$500 each.

Bruce Milne, Bairnsdale, Victoria, bought a stud ram for \$2000 and two stud ewes for \$425 and \$350.

The best price paid for flock rams was \$1800 and 60 of the 76 offered were sold at auction to average \$1170.

Mooney Bimbi Partnership,



Rick Hoolihan, Rose-Lea Border Leicester stud, Rydal, bought the \$3500 top-priced ram at the Sutton family's Wattle Farm Border Leicester sale held near Temora on Friday. Pictured holding the ram is Mr Hoolihan with Wattle Farm stud vendor Jeff Sutton and Mr Hoolihan's wool broker Greg Andrews, Schute Bell, Sydney.

bought two rams for \$1600 and \$1500; the Maclure family, Tarcutta, bought four rams for a top of \$1500, twice, to average \$1238, and Clemson Partners, "Lilydale", Burcher, secured nine rams to \$1600 (twice) to average \$1311.

At auction 23 of the 25 stud ewes offered were sold for a top of \$650 to average \$414.

Volume buyer was J.D. Baker and Company, Springhurst, Victoria, who bought 15 stud ewes for a top of \$475 to average \$380.

Vendor Jeff Sutton said they were happy with the return of loyal clients and excited to see new clients at the sale, many travelling from afar.

"There is confidence in the Border Leicester ram and first cross ewe market with quality sheep making

Maternal genetics in demand

PROPERTY SALE

STEPHEN BURNS

TURN and new clients are strong demand for quality stud Border Leicester ewes at the annual offering the Wattle Farm Border Leicester Stud at Temora.

With 71 ewes penned, 67 were sold to top price of \$290 and overall average price of \$200.

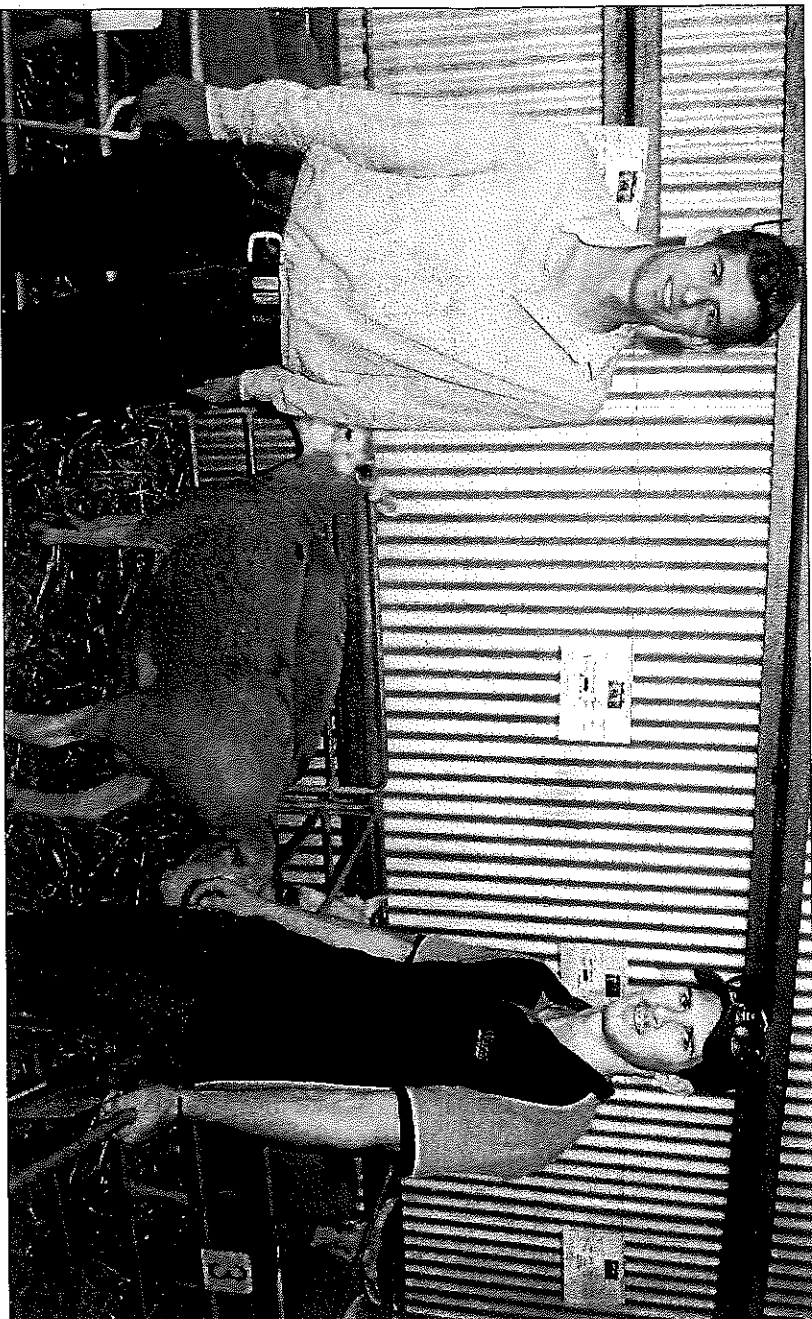
Studmaster, Jeff Sutton said he was "very happy with the support we received."

"This was a quality offering of good genetics and the sale reflected that," Mr Sutton said.

Top price at \$290 was paid to repeat client James Baker, from Rutherglen, Victoria in a draft of 12 ewes which averaged \$213.

New client Mason Galpin, from "Warrawindi", Penola, South Australia, purchased 14 ewes adding genetic depth to his existing stud.

Mr Galpin said his two-year-old stud has a steady clientele and he was keen to expand the breeding strength. "I have strong quality for my rams so I intend to increase my ewe



QUALITY ABOUND: Mason and Jordan Galpin, "Warrawindi", Penola, South Australia, with a selection of the 14 Border Leicester ewes they purchased. Picture: Stephen Burns

numbers," he said.

Mr Galpin paid to a top of \$260 in his selection of 14 ewes which were secured for an average price of \$196.

This is the first time Mr Galpin has bought ewes from

Wattle Farm and he said he was impressed by the sheep he had seen shown by Wattle Farm's Jeff Sutton.

"The ewes are a good type and there was a good selection to make our choice," Mr

Galpin said.

"They have great structure and constitution and are still good for another couple of lambs and will add genetic depth to our stud."

June High School added

two ewes to the flock paying \$270 and \$240 respectively.

Other purchasers included Michael Rowan of Young who bought 19 ewes for an average price of \$144, and Malcolm and Brodie Farley,

Kerang, Victoria who selected seven ewes for average price \$165.

Rick Houlihan, "Rose-lee", Rydal paid to \$240 for his draft of five ewes which averaged \$216, Sarah Heffernan, Junee paid to \$250 for her two ewes which averaged \$185, and Jim Fletcher, "Bellevue Park", Cooma, paid \$200 each for his selection of two ewes.

The selling agent was Landmark, Wagga with James Croker taking the bids. Reflecting on the sale, Mr Croker said everything sold well.

"It showed that clients have faith in the Wattle Farm direction," Mr Croker said.

ABOUT WATTLE FARM:

Wattle Farm Border Leicester Stud was established in 2005 by Jeff Sutton and family to meet the growing demand for quality Border Leicester flock and stud rams in the Riverina and further afield.

Wattle Farm provide structurally sound sheep with excellent growth rates and quality constitutions.

"We focus on producing borders with quality wool and that are even in type."

Sydney Royal
2016

Royal Easter Show results

Note: Results for each class are displayed as follows: Award, Catalogue Number, Exhibitor, Exhibit.

SHLBP - Meat & Dual Purpose Breeds BORDER LEICESTER

Class: 500 - Border Leicester - Ram, under 1

year old, showing milk teeth only - 5, 59 Wattle Farm Temora NSW 2666.

Class: 501 - Border Leicester - Ram, under 1 year old, showing milk teeth only, closely and evenly shorn - 1, 68 Wattle Farm Temora

NSW 2666.

Class: S504 - Border Leicester - Champion Junior Border Leicester Ram - Winner, 68 Wattle Farm Temora NSW 2666.

Class: 506 - Border Leicester - Ram, over 1 year old but under 2 years old - 2, 86 Wattle Farm Temora NSW 2666.

Class: 508 - Border Leicester - Ram, over 2 years old - 3, 93 Wattle Farm Temora NSW 2666.

Class: S510 - Border Leicester - Reserve Champion Senior Border Leicester Ram - Winner, 86 Wattle Farm Temora NSW 2666.

Class: S511 - Border Leicester - Grand Champion Border Leicester Ram - Winner, 68 Wattle Farm Temora NSW 2666.

Class: S511ST - Border Leicester - The Brian Walton Memorial Perpetual Trophy, donated by wife and children of the late Brian Walton for Grand Champion Border Leicester Ram - Winner, 68 Wattle Farm Temora NSW 2666.

Class: 515 - Border Leicester - Ewe, under 1 year old, showing milk teeth only - 2, 119 Wattle Farm Temora NSW 2666; 3, 121 Wattle Farm Temora NSW 2666; 4, 120 Wattle Farm Temora NSW 2666.

Class: 516 - Border Leicester - Ewe, under 1 year old, showing milk teeth only, closely and evenly shorn - 1, 127 Wattle Farm Temora NSW 2666.

Class: S520 - Border Leicester - Reserve Champion Junior Border Leicester Ewe - Winner, 119 Wattle Farm Temora NSW 2666.

Class: 522 - Border Leicester - Ewe, over 1 year but under 2 years old, closely and evenly shorn - 2, 149 Wattle Farm Temora NSW 2666.

Class: 523 - Border Leicester - Ewe, over 2 years old (to have reared a lamb in the previous 12 months) - 2, 152 Wattle Farm Temora NSW 2666; 3, 151 Wattle Farm Temora NSW 2666.

Class: S525 - Border Leicester - Reserve

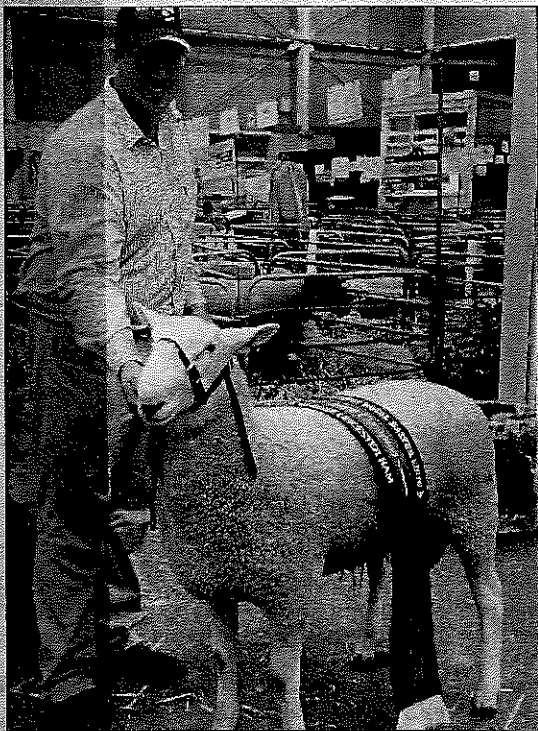
Champion Senior Border Leicester Ewe - Winner, 152 Wattle Farm Temora NSW 2666.

Class: 528 - Border Leicester - Peter Taylor Group, Consisting of one ram and two ewes showing milk teeth only, exhibited and bred by one Owner and selected from Exhibits in General Classes - 1, 159 Wattle Farm Temora NSW 2666.

Class: 529 - Border Leicester - Group, for the Best Team of four Border Leicester Sheep - 2, 163 Wattle Farm Temora NSW 2666.

Class: 530 - Border Leicester - The GB Richardson Jubilee Perpetual Trophy for the best team of six Border Leicester Sheep - 1, 165 Wattle Farm Temora NSW 2666.

Class: S530CT - Border Leicester - The GB Richardson Jubilee Perpetual Trophy, donated by the late GB Richardson for Class 530 team of six Border Leicester Sheep - Winner, 165 Wattle Farm Temora NSW 2666.



ABOVE - Jeff Sutton at the Royal Easter Show

Wattle Farm top Border ram

BY MARK GRIGGS

JUNIOR champion ram, Wattle Farm J, went on to become grand champion on Border Leicester ram and interbred long wool champion of the 2016 NSW Sheep Show for Jeff Sutton and family, Wattle Farm stud, Temora.



Grand champion ram.

The stud enjoyed a strong result from its 11 head also taking out junior champion on ewe and reserve grand champion ewe awards plus the group of three, group of four most successful exhibitor and best exhibit of the breed with "J".

Wattle Farm Twilight is by Coolawang Impact and it was her first outing. The breed attracted 11 exhibitors showing 47 rams and 61 ewes with classes up to 16 head on the mat. The 2014 junior champion ewe shown by the Cameron



Helen Campbell, Guligong with junior champion ram and Jeff Sutton, Wattle Farm stud, Temora, judge, Ian Michael, Echuca, Vic; reserve held by Ben Simmons, Talbragar stud.

family's Nundoone stud, Narromine, returned triumphant to take the senior and grand champion ewe award as a two and a half-year-old Victorian breeder and judge, Ian Michael, who

dispersed his Campaspe River stud at Echuca, in January, said ewes before him were equal to anywhere in Australia. "The senior and grand ewe is a very deep bodied

ewe which carried herself extremely well and had a quality covering of wool and the style of head that we are looking for," he said. "The junior ewe had extreme length and style of

wool but the older ewe was tops on the day."

Reserve junior champion ram winning the under one year shorn class and the objective measurement class, came from Talbragar stud of Ben Simmons, Leadville.

Mr Michael said the reserve ram had a good outlook but came up against some very good competition with Wattle farm's woolly junior.

"The junior and eventual champion ram had a better topline and handles beautifully," Mr Michael said.

Merrygoen based, Bimda-ree stud of the Sweeney family showed the reserve senior champion ram and reserve junior champion ewe. Rick Haselkorn, Rose Lea stud, Rydal, was most successful novice exhibitor.

MAY 2016



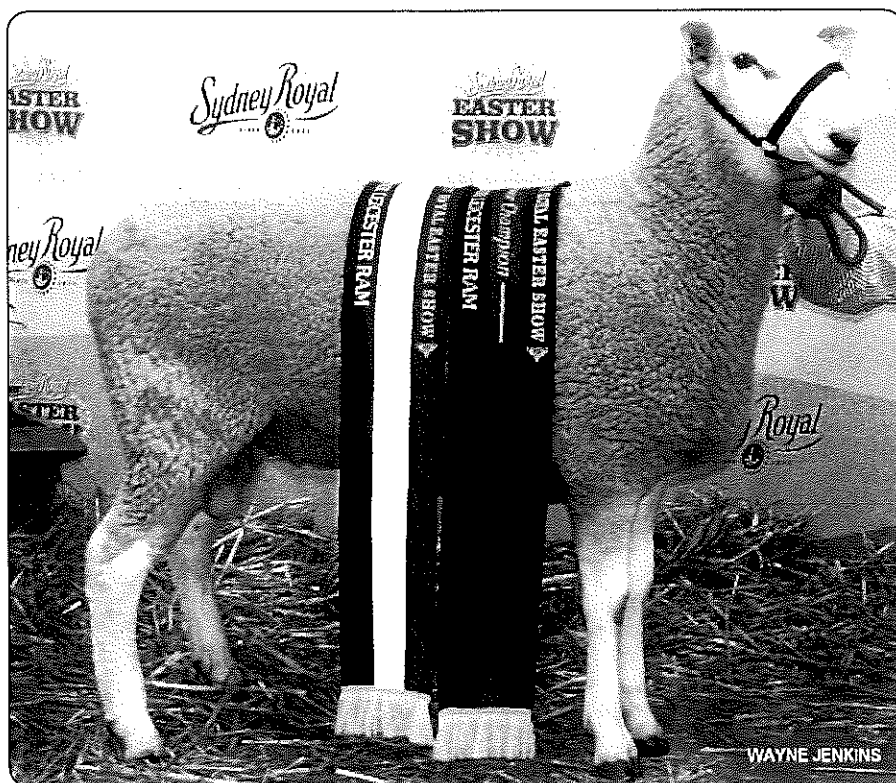
PROUD MEMBERS
OF THE NSW BORDER
LEICESTER ASSOC.
FLOCK NO. 4714

WATTLE FARM BORDERS



Border Leicester Stud

'Breeding Champion Borders'
Continued Sydney Royal success



- ★ **Junior & Grand Champion Border Leicester Ram**
- ★ **Reserve Champion Senior Ram**
- ★ **Reserve Champion Senior Ewe**
- ★ **Reserve Champion Junior Ewe**
- ★ **Peter Taylor and G.B. Richardson Group**

Annual Ram Sale – Friday 30th September
Cast For Age Ewe Sale – Friday 11th November

For more information contact Jeff Sutton
phone: (02) 6978 1810 mobile: 0418 203 440

email: wattle.farm@bigpond.com www.wattlefarm.com.au





PROUD MEMBERS OF
THE NSW BORDER
LEICESTER ASSOC.

WATTLE FARM BORDERS



FLOCK NO.
4714

'Breeding Champion Borders'
Continued major success...



**Dubbo NSW Sheep Show -
Wattle Farms 'JJ'**

- ★ Grand Champion Border Leicester ram
- ★ Supreme Border Leicester exhibit
- ★ Interbreed Longwool Champion ram
- ★ Also won - Junior Champion Ewe, Reserve
Grand Champion Ewe, Group of 3 BL sheep,
Group of 4 BL sheep, Most Successful
Border Leicester Exhibitor



**Bendigo Australian Sheep & Wool
Show - Wattle Farms Twilight -**

- ★ Junior Champion Ram & Grand Champion Ram
- ★ Junior Champion Ewe & Grand Champion Ewe
- ★ Supreme Border Leicester Exhibit of the show
- ★ Winning Border Leicester group of three
- ★ Champion British Breeds group
- ★ Supreme Interbreed Long wool group of the show
- ★ Supreme Interbreed Longwool Sheep
of the Australian Sheep and Wool show 2016

Annual Ram Sale - Friday 30th September
Cast For Age Ewe Sale - Friday 11th November



WATTLE FARM

For more information contact Jeff Sutton
phone (02) 4382 1111

southernweekly.com.au



GENETIC DOMINANCE: Jeff Sutton, principal of Wattle Farm Border Leicester Stud at Temora, returns home from Bendigo with multiple awards.

Temora stud wins at Bendigo

A COMBINATION of show ring wins and a buoyant commercial market for prime lambs has set things up perfectly for a Temora Stud.

Jeff Sutton is principal of Wattle Farm Border Leicester Stud and he returned home this week from the

Australian Sheep and Wool Show in Bendigo with a swag of prizes including supreme Australian long wool exhibit.

He and his family exhibited 14 sheep at Bendigo.

In the Border Leicester classes Wattle Farm exhibited the junior champion ram, grand champion ram and

junior champion ewe. This was followed by winning the grand champion ewe and supreme Border Leicester exhibit of the show.

"It was very humbling to do so well, I don't think it has all sunk in," he said. "This year was a complete sweep for us," he said.

Border ewe wins Supreme Interbreed Longwool sheep title at Bendigo Sheep & Wool Show

Wattle Farms Border Leicester stud, Temora, NSW took out the Elders sponsored Supreme Interbreed Longwool Sheep of the Show in July. This three-day sheep show is clearly one of the very top sheep events in the country with over 3,000 competition sheep entered, plus many more on display at various sites throughout the showground.



WAYNE JENKINS



PROUD MEMBERS OF
THE NSW BORDER
LEICESTER ASSOC.

WATTLE FARM BORDERS



FLOCK NO.
4714

'Breeding Champion Borders'

Continued major success...



Dubbo NSW Sheep Show - Wattle Farms 'JJ'

- ★ Grand Champion Border Leicester ram
- ★ Supreme Border Leicester exhibit
- ★ Interbreed Longwool Champion ram
- ★ Also won - Junior Champion Ewe, Reserve Grand Champion Ewe, Group of 3 BL sheep, Group of 4 BL sheep, Most Successful Border Leicester Exhibitor



Bendigo Australian Sheep & Wool Show - Wattle Farms Twilight

- ★ Junior Champion Ram & Grand Champion Ram
- ★ Junior Champion Ewe & Grand Champion Ewe
- ★ Supreme Border Leicester Exhibit of the show
- ★ Winning Border Leicester group of three
- ★ Champion British Breeds group
- ★ Supreme Interbreed Long wool group of the show
- ★ Supreme Interbreed Longwool Sheep
of the Australian Sheep and Wool show 2016

Annual Ram Sale - Friday 30th September
Cast For Age Ewe Sale - Friday 11th November



WATTLE FARM
Border Leicester Stud

**For more information contact Jeff Sutton
phone: (02) 6978 1810 mobile: 0418 203 440**

**PICTURE
GALLERY**

theweekytimes.com.au



Ewe win: Elizabeth 9, and Christine 7, Sutton, from Wattle Farm, with the interbreed champion ewe. Picture: DANNIKA BONSER



Studs repeat interbreed wins

By **JAMIE-LEE OLDFIELD**

IT was double *deja vu* in the interbreed sheep judging at the Royal Melbourne Show, with last year's champion studs repeating their successes.

For the second year running, a Suffolk from Allendale stud, Bordertown in South Australia, was the supreme interbreed ram, while Wattle Farm Border Leicesters, at Temora in NSW, won supreme interbreed ewe, also for the second year in a row.

Allendale principal Alistair Day's Suffolk ram, a 119.5kg sire with a 49mm muscle

depth, 94mm muscle width and scanning 7mm of fat, was placed above the Poll Dorset ram from Hildren stud in NSW in reserve.

The reserve ram weighed 145.5kg, with a 54mm muscle depth, 108mm width and fat scan of 9mm.

It was previously sashed supreme Poll Dorset exhibit and Hildren's James Frost said the ram was a twin from an embryo transfer program and would be retained in the stud.

Allendale also won the sire progeny interbreed with a group by Derrynock 183, while Hildren's Poll Dorsets came

out on top of the breeders group interbreed competition.

Jeff Sutton's Wattle Farm ewe continued to highlight the Border Leicester breed's maternal trait dominance, with his supreme exhibit of the breed named interbreed ewe.

A Suffolk ewe from the Blue Rock stud at Romsey was in reserve, having also been a champion at Hamilton's Sheepvention in July.

Border Leicester and interbreed judge Ian Cameron, from Nundoone Border Leicesters, at Narromine in NSW, said the Wattle Farm exhibit was as good a ewe he

had seen in a long time.

"It is an outstanding long wool ewe to beat the short wools, and this one had great carcass and very good wool," he said.

"We have been breeding Border Leicesters to produce a first-cross mother since the 1950s and agriculture has been trying to find a better prime lamb dam since then — and they haven't done it.

"Breeders using a first-cross ewe with terminal sire are doing better than other crosses because the lambing percentages and wool cut is keeping them on top."

INQUIRIES (03) 9292 2961 WWW.BEWS.CO.UK



JD MEMBER OF
NSW BORDER
BREEDER ASSOC.

WATTLE FARM BORDERS

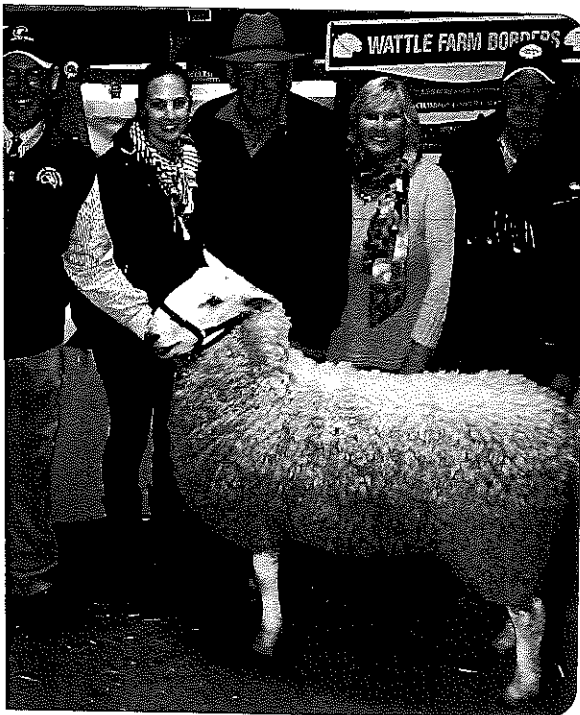


FLOCK NO.
4714

'Breeding Champion Borders'

Interbreed Champion ewe & Champion Border Leicester ram at Melbourne
continuing 2016 shows' successes from earlier Sydney, Dubbo & Bendigo triumphs.

Sale Success

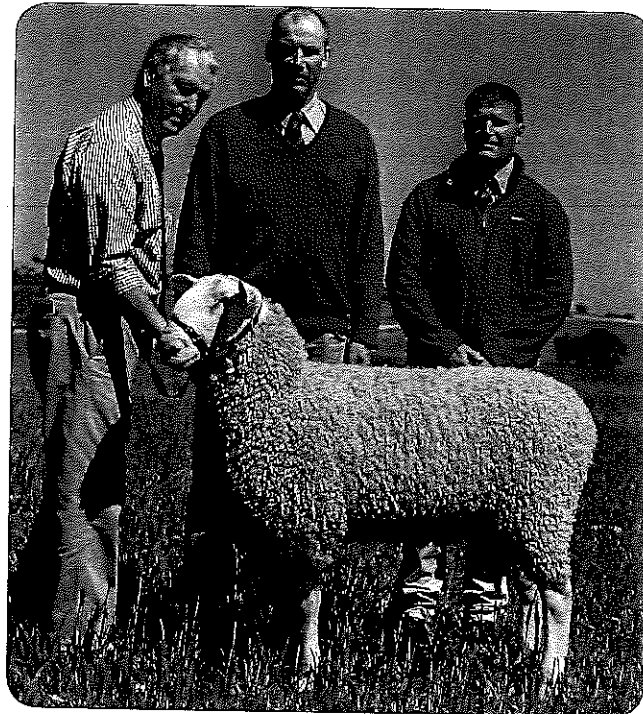


- ◆ Annual on-property sale
- ◆ 7 stud rams sold to \$3250 & ave \$2438
(above - sold to Cunningdroo stud, Tarcutta))
- ◆ stud ewes sold to \$600 (x3) & averaged \$445
- ◆ flock rams sold to \$1900 & averaged \$1255

Best ever sale result

These top genetic investments are paying off.

New Genetic Investments



- ◆ Purchased Coolawang 150107
(Adelaide Interbreed Longwool Champion Ram)
at the Coolawang annual ram sale (above).
- ◆ Purchased the top priced ram at Horsham from
Will Schilling, Glenlee Park stud.
- ◆ Also purchased Cadell 'Superior' line ram from the
Harper family at their annual sale

To produce top genetics you need to use top genetics.

For more information contact Jeff Sutton

Ph: (02) 6078 1810 Mob: 0418 000 110

CROSS THE BREEDS: *Border Leicester*

Vattle Farm success rewarded

nificant success at the major sheep shows of Ine, Dubbo, Bendigo and Melbourne was an important link to a very good result at the Wattle Farm Border Leicester sale at Temora in late September.

Jeff and Diane Sutton and family penned a high quality offering of seven stud rams, 21 stud ewes and 71 flock lots that was appreciated by the gallery that included 30 equal top and new bidders.

It certainly wasn't easy though as the atrocious weather which flooded and closed roads really threw up a big challenge for prospective buyers to get to the sale, and for the Sutton family to be able to present their stock in good order. The fact that they achieved that standard, combined with everyone in attendance being there with determined intent ensured a good result.

At the completion of the sale catalogue, in a 98% clearance all but one stud ewe and one stud ram had sold, plus an extra nine flock rams in reserve were also sold through the ring and cleared.

Through the flock ram section this was a 7% lift in average price and a 30% lift in rams sold from last year's result. Post sale a further 17 flock rams cleared privately to top off a wet, but very successful day for the Sutton family.



Diane Sutton and son Jeffery (centre) are pictured with the dominant stud ewe buyers at the Wattle Farm Border Leicester sale. They are Jim and Elizabeth Fletcher, Dry Plains and James Baker, Wangaratta with his Landmark agent, Hayden Rogers.



Wattle Farm principal, Jeff Sutton holds the \$3250 top-priced stud ram at the sale, purchased by Natalie, Julie and Tony Mutton, Tarcutta, with their Landmark Wagga agent David Coleman (centre).

Of the seven stud rams, only one passed under stud reserve, the other six averaging \$2438. Repeat clients Tony and Julie Mutton and family, Tarcutta, NSW and operating through Landmark Wagga's David Coleman paid the \$3250 top price for WF150225, sired by Coolawang 120037, the 2013 Adelaide champion ram.

The 21 stud ewes saw 20 clear to a top of \$600, achieved three times, and average \$445. Two long term buying accounts dominated the ewe buying. James Baker, J.D. Baker & Co, Wangaratta and buying through Landmark Wangaratta's Hayden Rogers, purchased eight to the \$600 equal top and at a \$406 average. Jim and Elizabeth Fletcher, Dry Plains in the Snowy Mountains of NSW also paid the \$600 top twice and averaged \$481 in also

Studs' twofold champion breed titles

Wattle Farm, Retallack success

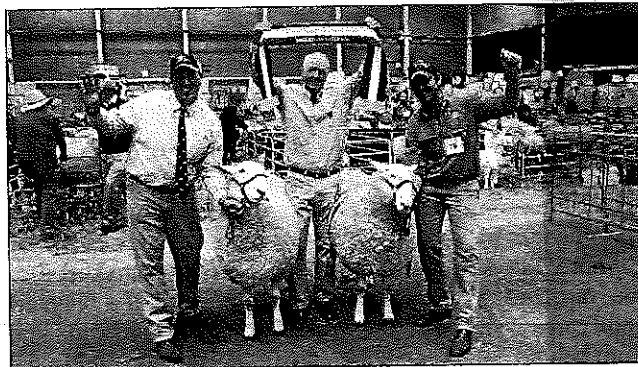
BY ANNABELLE CLEELAND

JUDGE Trevor James, Mundulla, South Australia, crowned exhibits from Wattle Farm, Temora, and Retallack, Ariah Park, both champion ram and ewe titles, respectively.

The event marked the largest meat breed showing, numbers-wise, for the 2017 Sydney Royal, with 10 exhibitors parading 135 Border Leicesters.

The Sutton family of Wattle Farm took home the junior, senior and grand champion ram titles. Mr James said Wattle Farm's rising one year-old ram was sashed junior champion for being a "great example of the breed, with tremendous neck extension, length and wool coverage". The August-2016 drop, by last year's grand champion ram's sire, Cadell Wonga 11th, boasted impressive growth for age at 83 kilograms.

A young ram exhibited by Toni and Derek Treanor, Kildara Glen, Duramana, was sashed reserve junior champion - a prelude to his first-place win in the objective measurement class.



Wattle Farm principal, Jeff Sutton, with the grand Border Leicester ram, judge, Trevor James, and reserve, held by Tom Corkhill, Normanhurst.

Senior champion ram, Wattle Farm JJ, caught the judge's eye. The son of Geraldine Gladiator went on to win the grand champion ram title because of his "length, bone and fleece qualities", ahead of reserve grand and senior champion ram, exhibited by Normanhurst Border Leicester stud, Boorowa. Sired by the 2014 junior champion ram, the rising two year-old had continued his run of wins, following champion ram at Canberra Royal.

Isabella and Graham Grinter, Retallack, hit their stride in the ewe judging, winning both the champion junior and senior ewe, be-

fore the senior woolly exhibit went on to be crowned the grand champion.

In her show debut, the champion ewe was applauded for its femininity, good fleece coverage and carriage. She is scanned in lamb to a Sydney Royal champion. Bauer Border Leicester stud, Ariah Park, were sashed reserve champion senior ewe and reserve grand title. Retallack's success continued in the group judging where they nabbed a win in the Peter Taylor trophy, consisting of one ram and two ewes showing milk teeth only, who were predominantly by stud super-sire, Exceed and Excel.



PROUD MEMBERS OF THE NSW BORDER LEICESTER ASSOC.

WATTLE FARM BORDERS



FLOCK NO. 4714

'Breeding Champion Borders'

Continued Sydney Royal Success



Senior & Grand Champion Border Leicester Ram

Junior Champion Ram

Annual Ram Sale - Friday 29th September

Jeff Sutton (02) 6978 1810, 0418 203 440

wattle.farm@bigpond.com





PROUD MEMBER OF
THE NSW BORDER
LEICESTER ASSOC.

WATTLE FARM BORDERS



FLOCK NO.
4714

'Breeding Champion Borders'

**More Show successes - Melbourne Royal Show
Reserve champion ram & Reserve champion ewe**

Thank you to all who inspected and bid on our sheep in 2017



The 2 rams sold at our annual sale to LA Barber Trust, 'Gilgi', Narromine for \$2500 & \$3000

Results: 21 stud ewes sold to \$500 & averaged \$395
5 stud rams sold to \$3000 & averaged \$2100
81 flock rams sold to \$1800 & averaged \$1180

**Enquiries welcome anytime for all classes of stock
For more information contact Jeff Sutton**

Ph: (02) 6978 1810 Mob: 0418 203 440

Email: wattle.farm@hignond.com

